

NAEP Style Questions - End of Symmetry Unit Evaluation - Gemma Flavin

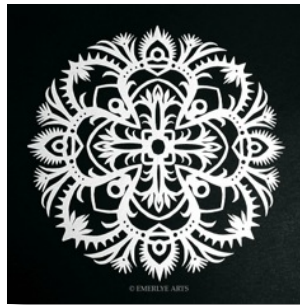
This assessment would potentially be used as an end of unit evaluation for an eighth grade class.

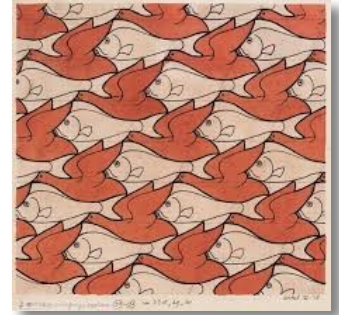
My unit involves the use of symmetry with a basic review project which would include the three major types of symmetry used in art: Rotational or Radial symmetry, Reflection or Linear symmetry and Translational Symmetry.

This unit involves several different projects including cut paper designs using linear symmetry, a positive and negative painting project using translational symmetry, colored pencil and marker shaded mandalas, tessellations, and finally a linoleum cut/printing project using radial symmetry.

1. Label each image with the correct type of symmetry from the list provided.



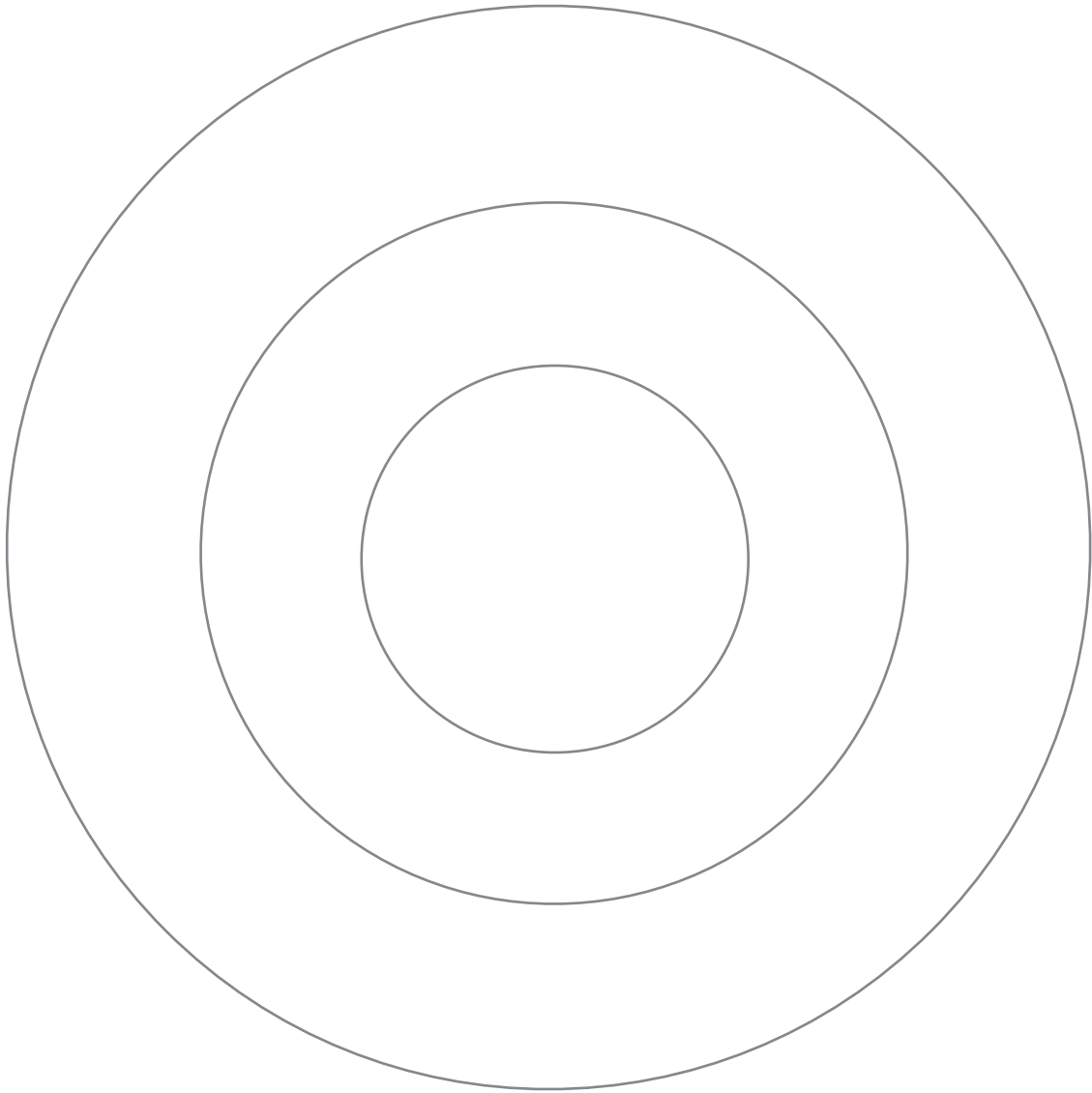




- A. Rotational or Radial Symmetry
- B. Translational Symmetry
- C. Reflection or Linear Symmetry

2. Describe why understanding the concept of positive and negative space is necessary when planning and cutting a piece of linoleum for printing.

3. Create a simple mandala using the three concentric circles provided below. Please include four lines of symmetry, at least three patterns created with shapes, colors, objects or lines and limit your color choices to five for the entire mandala.



Examples and student work from this unit:



